

Door Hooks



Brass plated door hooks.
 No. 10413 1/2" Long
 No. 10412 3/4" Long
 No. 10411 1" Long
 No. 19738 1-1/4" Long
 No. 19739 1-1/2" Long
30¢ each \$2.40/ 12 (20¢)

Door Hook Eyes



Brass plated.
 No. 10402 1/2" Long
 No. 19737 5/8" Long
15¢ each \$1.20/ 12 (10¢)

Door Knob-Carriage Clock



Extremely fine brass, 1/4" diameter head. M2.5 x 10mm. English made.
 No. 18454 **\$3.25 each**

Door Latch-Ansonia



Brass with a catch. Peen the end to complete assembly.
 No. 12714 1-1/8" Short Drop **\$2.00**

Door Latch-Banjo



Brass with a steel screw-in catch.
 No. 12182 **\$3.75 each**

Cuckoo Clock Back Door Latch



No. 20639 No. 15799 No. 19732
 No. 20639 Steel 3/4" Long
 No. 15799 Brass 3/4" Long
 No. 19732 Brass 13/16" Long
30¢ each \$3.00/ 12 (25¢)

Cottage Clock Door Latch



Brass cottage clock door latch is used on many early American clocks. Can be bent to fit. 3/4" long overall.
 No. 20612 **\$2.25 each**

Door Latch-Kitchen Clock



Brass plated steel. 7/16" wide x 1-5/8".
 No. 12180 **\$1.00 each**
\$10.20/ 12 (85¢)

Door Latches



No. 12178 No. 12179
 Fits American and European clocks.
 No. 12178 1-1/2" Long "OG"
 No. 12179 1" Long School Clock
\$2.00 each \$5.55/ 3 (\$1.85)

Turn Catch-Brass



English made.
 No. 22980 **\$11.00 each**

Magnetic Catch



No. 19740 No. 19741
 No. 19740 9/16" Dia. x 5/8" Long
 No. 19741 .. 1/2" x 1/2" x 1-3/4" 13 Lb. Pull
\$1.50 set \$3.75/ 3 (\$1.25)

Door Lock

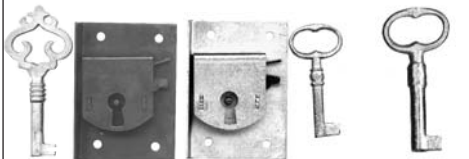


Steel lock with steel key.
 No. 15851 2" T x 15/16" W **\$3.00 set**

Steel Key Only

Fits above lock No. 15851.
 No. 20005 **\$1.75 each**

Door Lock



No. 15846 No. 19330 No. 19329
 1-3/4" x 2-7/16" 7/16" thick.

No. 15846 Steel lock, brass key **\$6.75 set**
\$19.50/ 3 (\$6.50)

No. 19330 .. Brass lock & key **\$10.50 set**

Door Key-Brass 2-1/4" Long

No. 19329 **\$2.75 each**

Door Lock-#2 Regulator



1" wide x 2-1/4" tall. With catch.
 No. 12181 **\$5.25 set**

Lock Sets-Brass With Key



No. 19756 No. 19757 No. 19755

With fancy escutcheon.
 No. 19756 1-1/8" x 5/8" Left **\$10.00**

With fancy escutcheon.
 No. 19757 .. 1-1/8" x 5/8" Right **\$10.00**

With oval escutcheon.
 No. 19755 1-1/16" x 5/8" **\$10.00**

Door Lock-Terry



Steel door lock and brass key.
 No. 10758 1-5/8" T x 7/8" W **\$4.25 set**

Terry Brass Key Only

No. 11229 1-3/8" Long **\$2.00 each**

Door Key Blanks-English



No. 18939 15/16" Long **\$4.00 each**
 No. 18940 1-5/16" Long **\$4.00 each**
 No. 18941 1-7/16" Long **\$4.00 each**
 No. 18942 1-1/2" Long **\$5.50 each**
 No. 18943 1-7/8" Long **\$5.50 each**

Fancy Door Key



Cast brass requires finishing. 2-3/8" long.
 No. 16701 **\$3.00 each**

Howard Miller Style Door Key



Brass plated door keys for Howard Miller grandfather clocks. 1-11/16" long.
 No. 19299 **\$5.00 each**

\$14.25/ 3 (\$4.75)

Tassels



Key
 Not
 Included

Colored Rayon tassels are 4" long with fancy knotted tops.

No. 20384 (Purple)..... Amethyst
 No. 20376 Black
 No. 20377 (Red)..... Cayenne
 No. 20378 (Light Blue)..... Delft
 No. 20379 Gold
 No. 20380 Navy
 No. 20381 (Ivory)..... Oyster
 No. 20385 (Burgundy)..... Wine
\$4.00 each \$11.25/ 3 (\$3.75)

Pulls-Brass



No. 15862

No. 15861



No. 15860

No. 15859

Brass plated with swivel pulls.
 No. 15862 7/8" W x 11/16" T **\$1.00 each**

No. 15861 . 1-1/16" W x 1-1/4" T **\$1.00 each**

No. 15860 ... 1-1/8" W x 1-1/4" T **\$1.00 each**

Solid Brass

No. 15859 7/8" W x 1-1/8" T **\$2.00 each**

Pull Repeat Knob



Brass knob 7/16" long with center hole.
 No. 20313 **\$7.75 each**

**We Welcome Visa,
 MasterCard & Discover**